

DETAILED SPECIFICATIONS	
MANUFACTURER'S RATING (CU. YDS)	1.9
NSWMA RATING (CU. YDS)	1.78
CLEAR TOP OPENING - LENGTH (INCHES)	40
- WIDTH (INCHES)	70
CHAMBER LENGTH (INCHES)	42.8
RAM PRESSURE (PSI) / RAM FORCE (LBS) - NORM	19.7 / 38,000
- MAX	21.9 / 42400
SYSTEM HYDRAULIC PRESSURE (PSI) - NORM	1750
SYSTEM HYDRAULIC PRESSURE (PSI) - MAX	1950
RAM STROKE (INCHES)	45.7
RAM FACE - HEIGHT (INCHES)	27
- WIDTH (INCHES)	71.75
RAM PENETRATION (INCHES)	2.875
DISCHARGE OPENING - HEIGHT (INCHES)	31.188
- WIDTH (INCHES)	72
BASE UNIT WEIGHT (LBS) (EXCLUDING POWER UNIT, HYDRAULIC FLUID & HOPPER)	9800

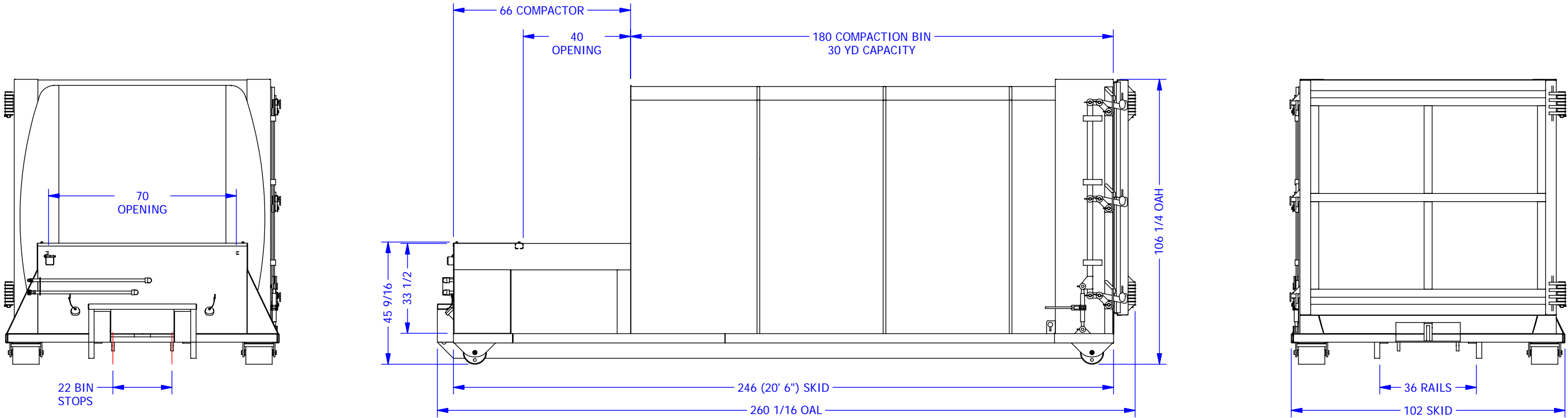
CONSTRUCTION SPECS	
PACKER - WALLS	1/4" PLATE
- FLOOR	3/8" PLATE
RAM - FLOOR	3/8" PLATE
- FACE	1/2" PLATE
HYDRAULIC CYLINDER - BORE	4"
- ROD	2"

CONTROL SPECIFICATIONS	
STANDARD	OPTIONAL
KEYED ON / OFF SWITCH	REMOTE JOG STATION
EMERGENCY STOP	CYCLE TIMER
CYCLE START	HOPPER INTERLOCK
SINGLE / CONTINUOUS	OIL TANK HEATER
FULL LIGHT	MANUAL JOG CONTROLS
POWER ON LIGHT	

DISCONNECT AMPERAGE	
VOLTAGE (VOLTS)	10 HP
208 - 3 Phase	60
220 - 3 Phase	60
240 - 3 Phase	60
460 - 3 Phase	30
575 - 3 Phase	30
600 - 3 Phase	30

CONSTRUCTION SPECIFICATIONS	
STANDARD	OPTIONAL
CURVED WALLS	CUSTOM HOPPER / CHUTE
FRONT & REAR PICKUP	SIX GROUND ROLLERS
RETAINER TEETH	PUSH BAR
REMOTE GREASE KIT	POWER UNIT COVER

POWER UNIT SPECIFICATIONS	
	10 HP
CYCLE TIME (SECONDS)	44
VOLUME PER HOUR (CU YD.)	146



THIS DRAWING IS THE SOLE
PROPERTY OF UNIVERSAL HANDLING
EQUIPMENT COMPANY LIMITED.
REPRODUCTION IN WHOLE OR IN
PART IS STRICTLY PROHIBITED
WITHOUT OUR WRITTEN CONSENT

UNLESS OTHERWISE
SPECIFIED DIMENSIONS
ARE IN INCHES
AND TOLERANCES ARE:

FRAC	.XXX	ANGLE
± 1/32	± .005	± 1/2°

REV	DESCRIPTION	DATE	BY

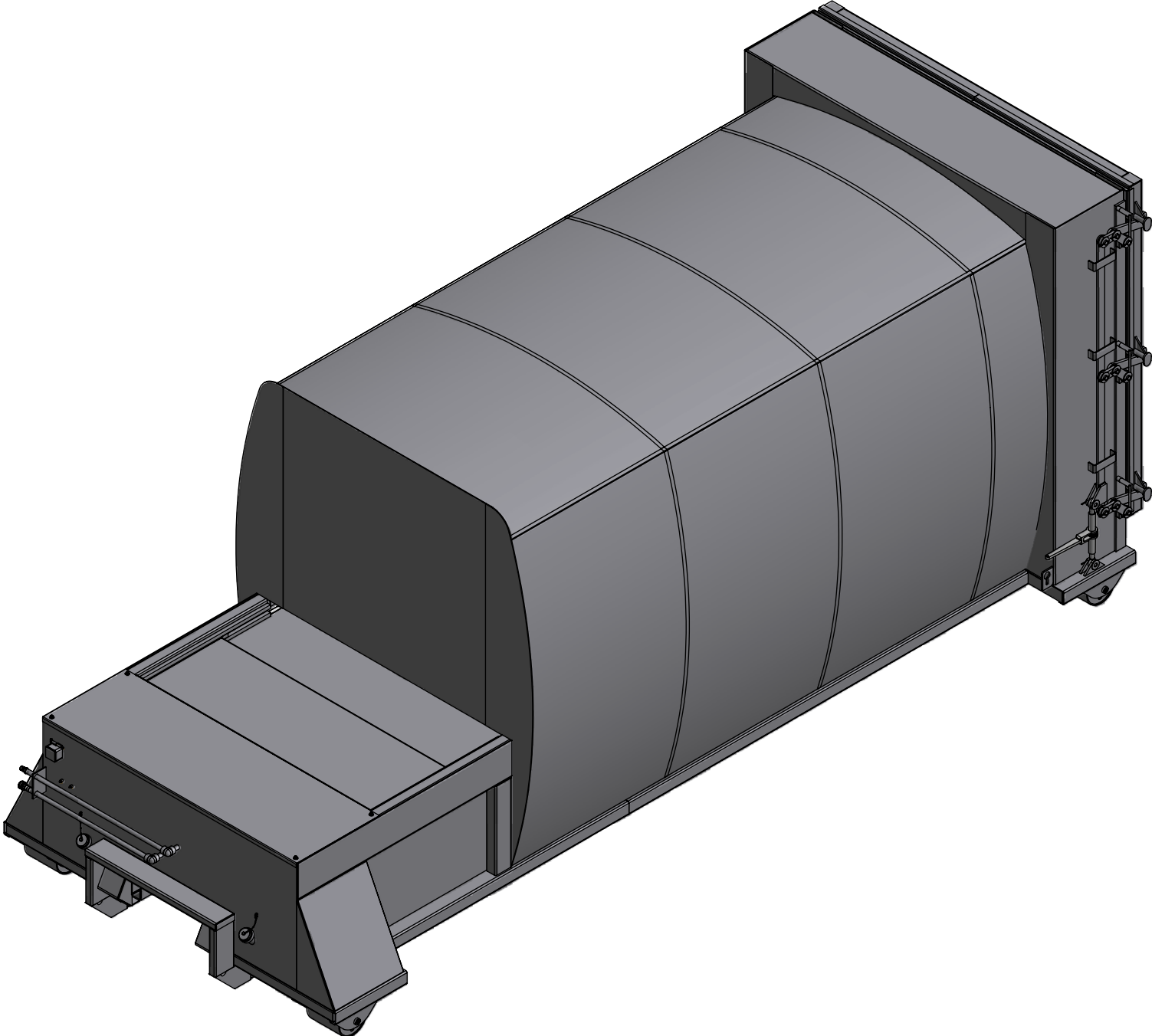



UNIVERSAL HANDLING EQUIPMENT

SPECIFICATIONS FOR UP214 XS XPL ~~WIDE MOUTH~~, CABLE SKID

Sheet 1 of 2

DESIGN:	GHGA	1/22/2007		DWG. NO.	REV
DWG:	GHGA	2/16/2010	SCALE: 1/40	1406-G009	0



THIS DRAWING IS THE SOLE PROPERTY OF UNIVERSAL HANDLING EQUIPMENT COMPANY LIMITED. REPRODUCTION IN WHOLE OR IN PART IS STRICTLY PROHIBITED WITHOUT OUR WRITTEN CONSENT	UNLESS OTHERWISE SPECIFIED DIMENSIONS ARE IN INCHES AND TOLERANCES ARE: FRAC .XXX ANGLE ± 1/32 ± .005 ± 1/2'	REV	DESCRIPTION	DATE	BY	<div><div></div><div>UNIVERSAL HANDLING EQUIPMENT</div></div>						
						SPECIFICATIONS FOR UP214 XS XPL WIDE MOUTH, CABLE SKID						
						DESIGN: GHGA		1/22/2007		DWG. NO.		REV
						DWG: GHGA		2/16/2010		SCALE: 1/32		
										1406-G009		
										0		